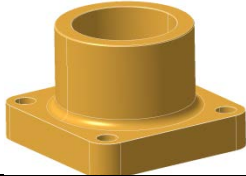


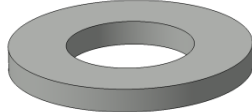

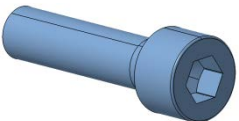


INSTRUCTIONS

KIT NUMBER: 100153-1		DESCRIPTION: KIT 100153 FLANGE DISCHARGE (STEEL) TG310
DOCUMENT No: 700674-1	REV: A	

Parts list

Qty	P/N	Description	Picture
1	703983	DISCHARGE STEEL FLANGE FOR 2" STEEL PIPE	
4	900116	WASHER, M10 SPRING DACROMET 500LC, DIN 127B	
1	900578	LUBRICATION – SUPER "O" LUBE-2G	
4	901022	WASHER M10 X 20 OD X 2 THK DACROMET	
1	901853	O' RING, PARKER #2-236-EPDM 740-75 - 1W/2LG-DISCHARGE	
4	902616	SCREW M10X40 S/HD CAP 12.9 DACROMET 5-6g	

KIT NUMBER: 100153-1	DESCRIPTION: KIT 100153 FLANGE DISCHARGE (STEEL) TG310
DOCUMENT No: 700674-1	REV: A

Mounting Instructions

Discharge Flange:

1. Assemble the four sets of M10 x 35 hex head screws and spring washers.
2. Align the discharge valve/flange with the compressor discharge port (see **Figure 1**).

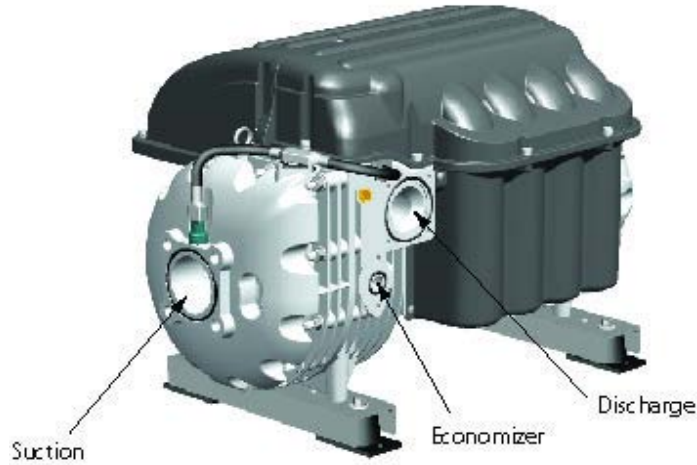


Figure 1 Discharge Port

3. Insert the four hex head screws. Tighten the screws to 22 N-m using the torque sequence shown in Figure 2.

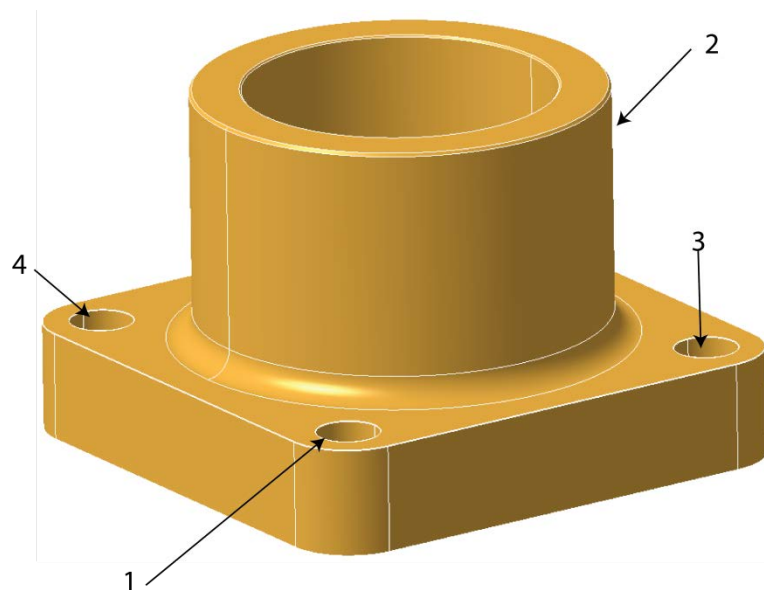


Figure 2 Torque Sequence